

SOUTHERN CRANES & ACCESS

Manitou MT1135



Southern Cranes & Access Ltd

Pollards Way, Southwater, Horsham, RH13 9AQ

Access hire: 01403 339105 . Crane hire: 01403 790874
sales@southerncranes.co.uk . www.southerncranes.co.uk

Cranes
Access
Transport
Contract Lifting
Training

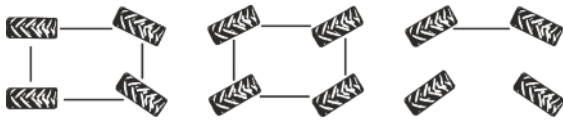
Manitou MT1135

Capacity

Lifting Lift Capacity.....3,500 kg
 Lift Height.....11.05 m
 Maximum Reach.....7.75 m

Engine and transmission

Fuel.....Diesel
 Engine.....Perkins Stage 3B
 Engine Power.....75 kW
 Drive.....4 wheel drive
 Transmission.....torque converter
 Number of gears.....4 forward, 4 reverse
 Travel Speed.....26 km/h
 Steering.....4 wheel steer, 3 modes



Un-laden times

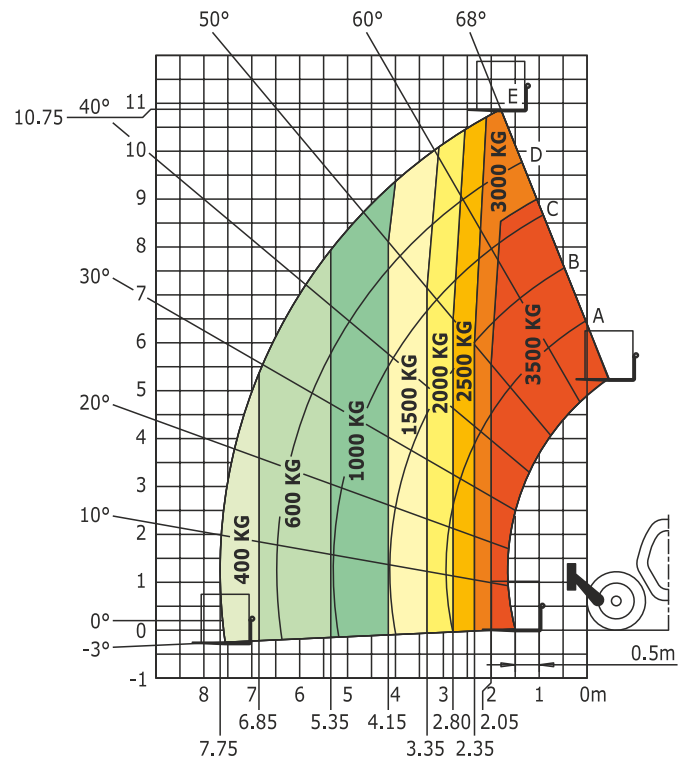
Lifting.....8.5 sec
 Lowering.....7.0 sec
 Extension.....13.0 sec
 Retraction.....9.0 sec
 Crowd.....3.0 sec
 Dump.....3.0 sec

Dimensions

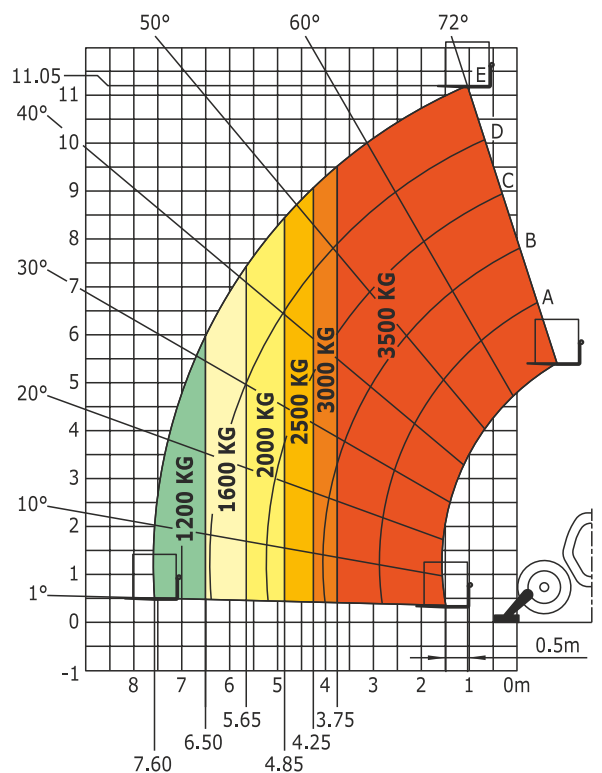
Length.....5.37 m
 Width.....2.28 m
 Height.....2.42 m
 Weight.....8,800 kg
 Turning Radius.....3.85 m
 Ground Clearance.....0.41 m

The new telescopic forklifts from Manitou represent a complete revolution in methods of lifting. These machines offer high performance lifting and loading capability. These fork-lifts are your allies in your quest for productivity and simplicity. The performance and manoeuvrability of these new telescopic fork-lift trucks let you carry out all your building and renovation tasks quickly and in complete safety.

Machine on tyres with forks



Machine on stabilizers with forks



Southern Cranes & Access Ltd

Pollards Way, Southwater, Horsham, RH13 9AQ

Access hire: 01403 339105 . Crane hire: 01403 790874
 sales@southerncranes.co.uk . www.southerncranes.co.uk

22 September 2016